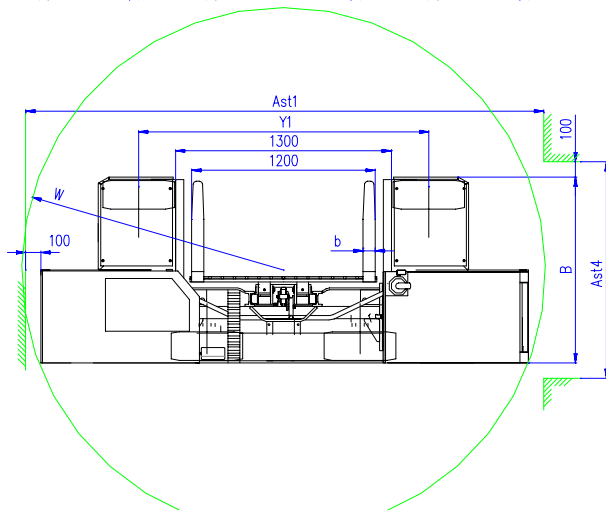
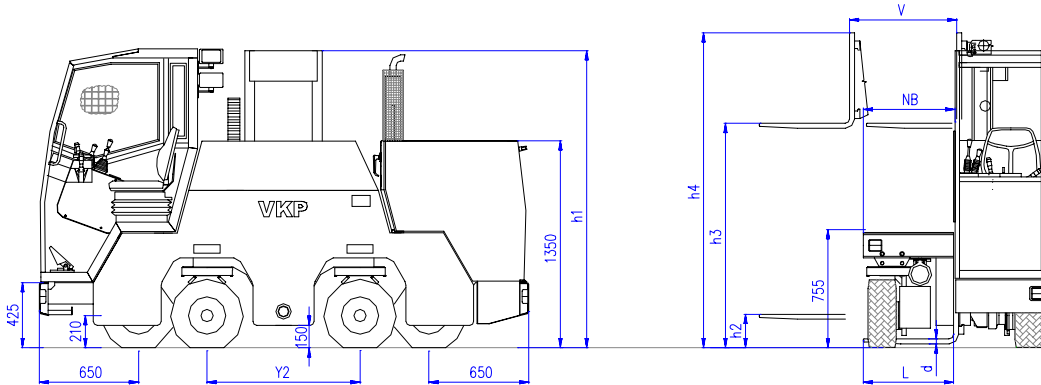
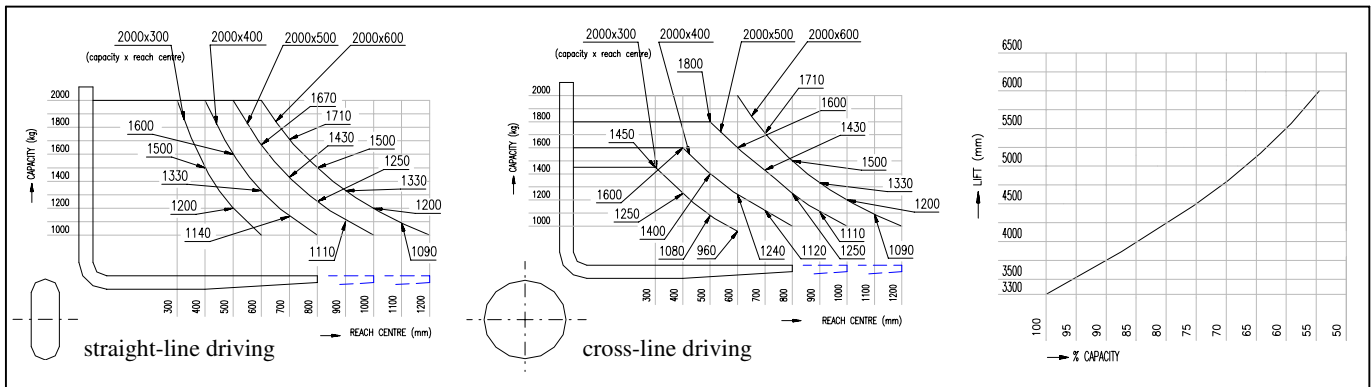


4-way sideloader SO 20 M



Technical data

Load diagram



V.K.P. spol. s r. o. Chrudim

Na Valech 176, 537 01

Czech Republic

tel.: +420 469 610 852

fax: +420 469 610 851

e-mail: vkp@traveller.cz

www.vkp.cz



Marking	1	Manufacturer		VKP	VKP	VKP	VKP		
	2	Model	SO 20M	SO 20M-33-3	SO 20M-33-4	SO 20M-33-5	SO 20M-33-6		
	3	Capacity	Q Lift	kg	2000/1500	2000/1700	2000/1900	2000	
	4	Reach centre	c	mm	300	400	500	600	
	5	Type of engine	Electric, (battery), Diesel, LPG		Diesel	Diesel	Diesel	Diesel	
	6	Steering			seated	seated	seated	seated	
	7	Tyres	V= Cushion/Rubber, L =Pneumatic		L/L	L/L	L/L	L/L	
	8	Wheels	Number front/rear		2/2+	2/2+	2/2+	2/2+	
Dimensions	9	Lift (standard)	h3	mm	3300	3300	3300	3300	
	10	Free lift	h2	mm	300	300	300	300	
	11	Fork dim.	height x width x length		mm	40/80/600	40/80/800	40/100/1000	40/100/1200
	12	Tilting	front/ rear	1°	6/4	6/4	6/4	6/4	
	13	Dimensions	L Length	mm	3250	3250	3250	3250	
	14		B Width	mm	1200	1400	1600	1800	
	15		h1 closed height *)	mm	2330	2330	2330	2330	
	16		h4 extended height *)	mm	3980	3980	3980	3980	
	17		H1 Height over cabin*)	mm	1950	1950	1950	1950	
	18		V reach out	mm	700	900	1100	1300	
	19		B1 chassis cut out	mm	1300	1300	1300	1300	
	20		B2 Fork adjustment min-max	mm	240-1200	240-1200	260-1200	260-1200	
	21		H platform height*)	mm	755	755	755	755	
	22	NB platform width	mm	600	800	1000	1200		
	23	Turning radius	Wa outer/ Wi inner		mm	1700	1700	1700	1700
	24	Aisle width	Ast4 for straight ahead		mm	1400	1600	1800	2000
	25		Aw 1/Aw2 for 90° – turning		mm	3400	3400	3400	3400
Capacity	26	Stability	Acc.to FEM/DIN -EN yes/no			yes	yes	yes	yes
	27	Speed	travel with/ without load	km/h	8/10	8/10	8/10	8/10	
	28		lift with/ without load	m/s	0,3/0,32	0,3/0,32	0,3/0,32	0,3/0,32	
	29		lowering with/ without load	m/s	0,5/0,25	0,5/0,25	0,5/0,25	0,5/0,25	
	30		Reach our of mast	m/s	0,25	0,25	0,25	0,25	
	31	Traction force	Hook		daN	1143	1143	1143	1143
32	Gradeability	with/ without load		%	16/27	16/27	16/27	16/27	
Weight	33	Weight of truck	incl.D56 battery		kg	3710	3750	3790	3840
	34	Axle load	with load front/rear		kg	2955/2755	2860/2890	2805/2985	2760/3080
Travel	35	Tyres	No. front/ rear			2/2	2/2	2/2	2/2
	36		Dimensions front			18x7-8/16 PR	18x7-8/16 PR	18x7-8/16 PR	18x7-8/16 PR
	37		Dimensions rear			18x7-8/16 PR	18x7-8/16 PR	18x7-8/16 PR	18x7-8/16 PR
	38	Axle base	Y	mm	1900/980	1900/980	1900/980	1900/980	
	39	Wheel	Sv/Sh – tyre centre front/rear		mm	970/970	1170/1170	1370/1370	1570/1570
	40	Clearance	m1 under lifting device *)		mm	150	150	150	150
	41		m2 centre of axle base *)		mm	150	150	150	150
	42	Brakes	foot/ hand			foot/hand	foot/hand	foot/hand	foot/hand
43	wet/mechanic			hydr.neg/hydr.neg.	hydr.neg/hydr.neg.	hydr.neg/hydr.neg.	hydr.neg/hydr.neg.		
Drive	44	Battery	Type			starting bat	starting bat	starting bat	starting bat
	45		Voltage/ Ah		V/Ah	12/61	12/61	12/61	12/61
	46		Weight		kg	16,3	16,3	16,3	16,3
	47	Combust.engine	Manufacturer/type			KUBOTA D1105	KUBOTA D1105	KUBOTA D1105	KUBOTA D1105
	48		Performance ISO/ TR 14 396		kW	18,7	18,7	18,7	18,7
	49		RPM		n/min	3000	3000	3000	3000
	50		Torque		Nm/n	68,2/2000	68,2/2000	68,2/2000	68,2/2000
	51		cycles/cylinders/volume (cm3)			4/3/1124	4/3/1124	4/3/1124	4/3/1124
	52	Clutch	Type			-	-	-	-
	53	Shifting gears	Type			stepless	stepless	stepless	stepless
54	no. of gears, forward/reverse			-	-	-	-		
55	Gearbox	Type			hydrostat.	hydrostat.	hydrostat.	hydrostat.	
Coplements	56	Hydr. pressure	for attachments	bar	170	170	170	170	
	57	Steering	Type			hydrostat.	hydrostat.	hydrostat.	hydrostat.
	58	Lighting	for road traffic Yes/No			yes	yes	yes	yes
*) without load, modification reserved without notice									
h1 = h3/2 + 680; h4 = h3 + 680									