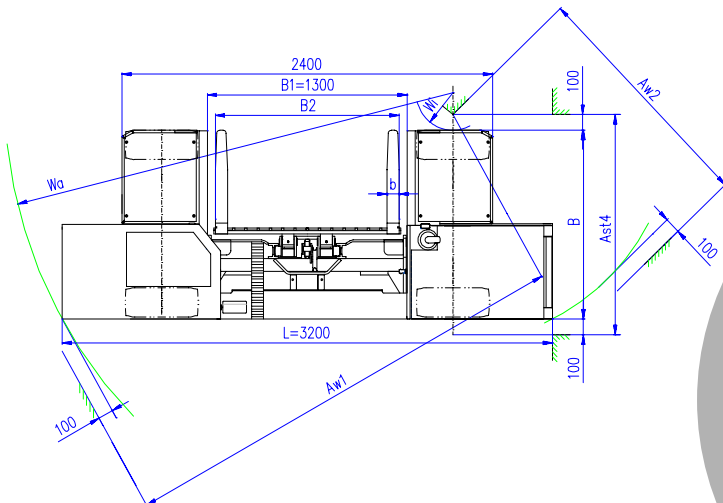
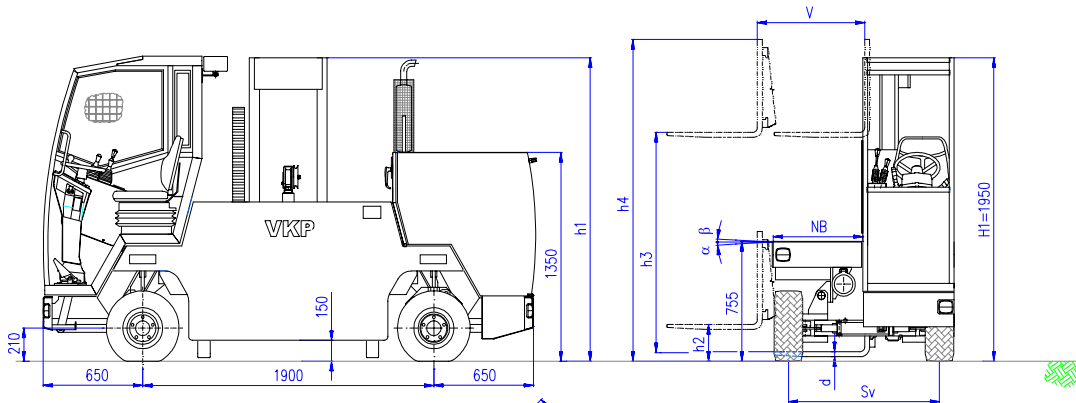
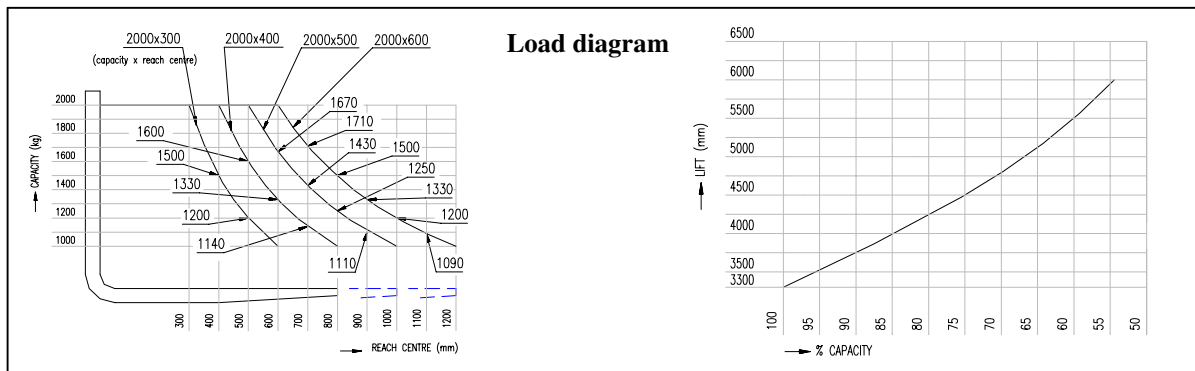


Sideloader SB 20 M



Technical data



V.K.P. spol. s r. o. Chrudim

Na Valech 176, 537 01

Czech Republic

tel.: +420 469 610 852

fax: +420 469 610 851

e-mail: vkp@traveller.cz

www.vkp.cz



Marking	1	Manufacturer		VKP	VKP	VKP	VKP
	2	Model	SB 20M	SB 20M-33-3	SB 20M-33-4	SB 20M-33-5	SB 20M-33-6
	3	Capacity	Q Lift kg	2000	2000	2000	2000
	4	Reach centre	c mm	300	400	500	600
	5	Type of engine	Electric, (battery), Diesel, LPG	Diesel	Diesel	Diesel	Diesel
	6	Steering		seated	seated	seated	seated
	7	Tyres	V= Cushion/Rubber, L =Pneumatic	L/L	L/L	L/L	L/L
	8	Wheels	Number front/rear	2/2+	2/2+	2/2+	2/2+
Dimensions	9	Lift (standard)	h3 mm	3300	3300	3300	3300
	10	Free lift	h2 mm	300	300	300	300
	11	Fork dim.	height x width x length mm	40/80/600	40/80/800	40/100/1000	40/100/1200
	12	Tilting	front/ rear 1°	4/5	3,5/4,5	3/4	2,5/3,5
	13	Dimensions	L Length mm	3250	3250	3250	3250
	14		B Width mm	1200	1400	1600	1800
	15		h1 closed height *) mm	2330	2330	2330	2330
	16		h4 extended height *) mm	3980	3980	3980	3980
	17		H1 Height over cabin*) mm	1950	1950	1950	1950
	18		V reach out mm	700	900	1100	1300
	19		B1 chassis cut out mm	1300	1300	1300	1300
	20		B2 Fork adjustment min-max mm	240-1200	240-1200	260-1200	260-1200
	21	H platform height*) mm	755	755	755	755	
	22	NB platform width mm	600	800	1000	1200	
	23	Turning radius	Wa outer/ Wi inner mm	2960/300	3040/250	3130/200	3230/150
24	Aisle width	Ast4 for straight ahead mm	1400	1600	1800	2000	
25		Aw 1/Aw2 for 90° – turning mm	2920/1590	3040/1760	3160/1940	3280/2110	
Capacity	26	Stability	Acc.to FEM/DIN -EN yes/no	yes	yes	yes	yes
	27	Speed	travel with/ without load km/h	12,5/13,2	12,5/13,2	12,5/13,2	12,5/13,2
	28		lift with/ without load m/s	0,3/0,32	0,3/0,32	0,3/0,32	0,3/0,32
	29		lowering with/ without load m/s	0,5/0,25	0,5/0,25	0,5/0,25	0,5/0,25
	30		Reach our of mast m/s	0,25	0,25	0,25	0,25
	31	Traction force	Hook daN	1143	1143	1143	1143
32	Gradeability	with/ without load %	21/27	21/27	21/26	21/26	
Weight	33	Weight of truck	incl.D56 battery kg	3005	3065	3125	3185
	34	Axle load	with load front/rear kg	2400/2605	2430/2635	2460/2665	2490/2695
Travel	35	Tyres	No. front/ rear	2/2	2/2	2/2	2/2
	36		Dimensions front	18x7-8/16 PR	18x7-8/16 PR	18x7-8/16 PR	18x7-8/16 PR
	37		Dimensions rear	18x7-8/16 PR	18x7-8/16 PR	18x7-8/16 PR	18x7-8/16 PR
	38	Axle base	Y mm	1900	1900	1900	1900
	39	Wheel	Sv/Sh – tyre centre front/rear mm	1000/1000	1200/1200	1400/1400	1600/1600
	40	Clearance	m1 under lifting device *) mm	150	150	150	150
	41		m2 centre of axle base *) mm	150	150	150	150
	42	Brakes	foot/ hand	foot/hand	foot/hand	foot/hand	foot/hand
43	wet/mechanic		hydr.neg/hydr.neg.	hydr.neg/hydr.neg.	hydr.neg/hydr.neg.	hydr.neg/hydr.neg.	
Drive	44	Battery	Type	starting bat	starting bat	starting bat	starting bat
	45		Voltage/ Ah V/Ah	12/61	12/61	12/61	12/61
	46		Weight kg	16,3	16,3	16,3	16,3
	47	Combust.engine	Manufacturer/type	KUBOTA D1105	KUBOTA D1105	KUBOTA D1105	KUBOTA D1105
	48		Performance ISO / TR 14 396 kW	18,7	18,7	18,7	18,7
	49		RPM n/min	3000	3000	3000	3000
	50		Torque Nm/n	68,2/2000	68,2/2000	68,2/2000	68,2/2000
	51		cycles/cylinders/volume (cm3)	4/3/1124	4/3/1124	4/3/1124	4/3/1124
	52	Clutch	Type	-	-	-	-
	53	Shifting gears	Type	stepless	stepless	stepless	stepless
54	no. of gears, forward/reverse		-	-	-	-	
55	Gearbox	Type	hydrostat.	hydrostat.	hydrostat.	hydrostat.	
Cplements	56	Hydr. pressure	for attachments bar	170	170	170	170
	57	Steering	Type	hydrostat.	hydrostat.	hydrostat.	hydrostat.
	58	Lighting	for road traffic Yes/No	yes	yes	yes	yes
*) without load, modification reserved without notice h1 = h3/2 + 680; h4 = h3 + 680							