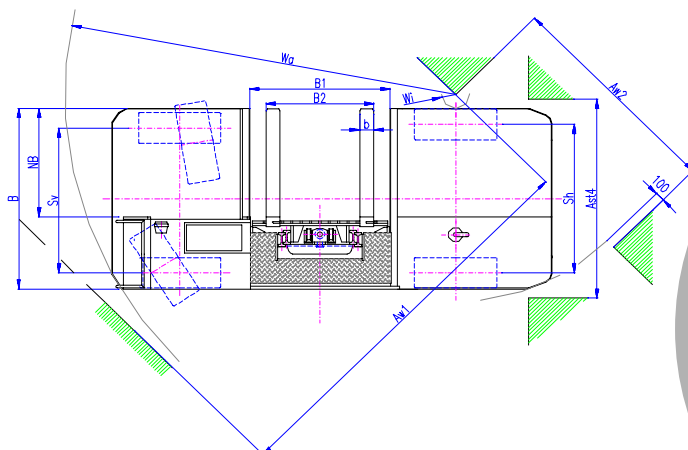
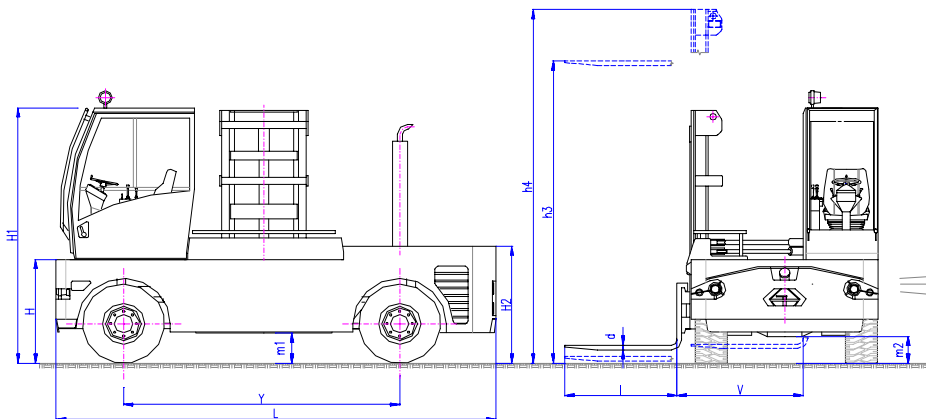
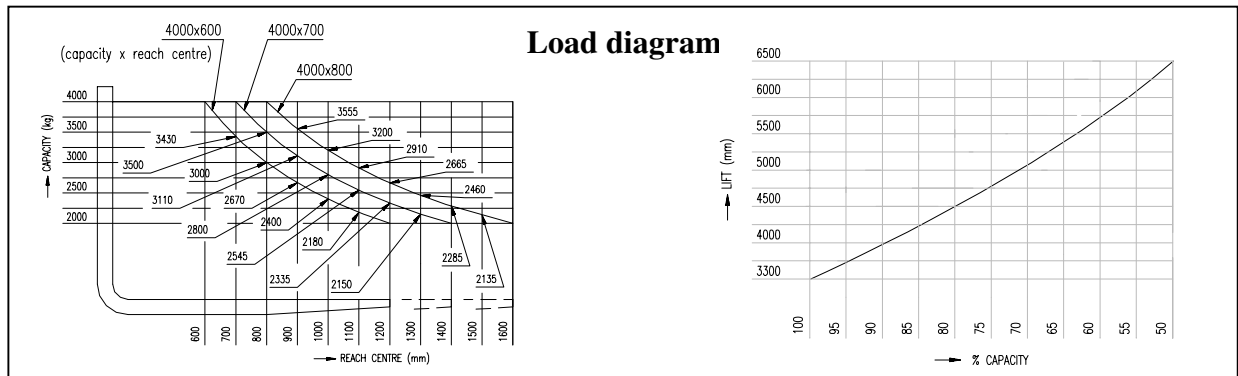


Sideloader

SB 40 S



Technical data



V.K.P. spol. s r. o. Chrudim

Na Valech 176, 537 01

Czech Republic

tel.: +420 469 610 852

fax: +420 469 610 851

e-mail: vkp@traveller.cz

www.vkp.cz

Marking	1	Manufacturer		VKP	VKP	VKP		
	2	Model	SB 40S	SB 40S-33-6	SB 40S-33-7	SB 40S-33-8		
	3	Capacity	Q	kg	4000	4000	4000	
	4	Loadcentre	c distance	mm	600	700	800	
	5	Driving	elektric (Battery), Diesel, Petrol, LPG		Diesel	Diesel	Diesel	
	6	Steering	Hand, Walk, Stand, Seat		seat	seat	seat	
	7	Tyres	V=Cushion/Rubber, L=Pneumatic		L/L	L/L	L/L	
	8	Wheel	Number front/rear		2/2+	2/2+	2/2+	
Dimensions	9	Lift	h3	mm	3300	3300	3300	
	10	Free lift	h2		870	870	870	
	11	Fork dim	height x width x length	mm	45/130/1200	50/130/1400	50/140/1600	
	12	Tilting	of mast front/ rear	1°	4/5	3,5 / 4,5	3/4	
	13	Dimensions	L - Length	mm	4370	4370	4370	
	14		B - Width	mm	2000	2200	2400	
	15		h1 closed height *)	mm	2600	2600	2600	
	16		h4 extended height *)	mm	4240	4240	4240	
	17		H1 Cabin height *)	mm	2600	2600	2600	
	18		V reach out	mm	1350	1550	1750	
	19		B1 chassis cut out	mm	1320	1320	1320	
	20		B2 Fork adjustment min - max	mm	260-1260	260-1260	260-1260	
	21		H platform height*) /H2 engine hood height	mm	800/1080	800/1080	800/1080	
	22	NB platform width	mm	1200	1400	1600		
	23	Turning radius	Wa outer/ Wi inner	mm	3950/150	4050/150	4170/150	
24	Aisle dim	Ast4 for straight ahead	mm	2200	2400	2600		
25		Aw1/Av2 for turning 90°	mm	4030/2380	4150/2570	4270/2760		
Capacity	26	Stability	Acc. FEM/ DIN - EN		ano	ano	ano	
	27	Speed	Travel with/ without load	km/h	24/25	24/25	24/25	
	28		Lift with/ without load	m/s	0,3/0,32	0,3/0,32	0,3/0,32	
	29		Lowering with/ without load	m/s	0,5/0,25	0,5/0,25	0,5/0,25	
	30		Reach out of mast	m/s	0,25	0,25	0,25	
	31	Drawbar pull	Hook	daN	2600	2600	2600	
32	Gradient	with/ without load	%	25/48	25/48	25/48		
Weight	33	Weight	incl battery	kg	6750	6905	7060	
	34	Axle load	with/ without load	kg	5075/5675	5150/5755	5220/5840	
Travel	35	Tyres	No. of tyres front/ rear		2/2	2/2	2/2	
	36		Dimensions front		27x10-12/16PR	27x10-12/16PR	27x10-12/16PR	
	37		Dimensions rear		27x10-12/16PR	27x10-12/16PR	27x10-12/16PR	
	38	Axle distance	Y	mm	2600	2600	2600	
	39	Track	Cl Tyres front/ rear		mm	1680/1680	1880/1880	2080/2080
	40	Clearance	m1 center mast, loaded *)		mm	205	205	205
	41		m2 center truck, loaded *)		mm	200	200	200
42	Brakes	foot / hand			foot / hand	foot / hand	foot / hand	
43		wet / mechanic			hydraulic	hydraulic	hydraulic	
Drive	44	Battery	type		starter	starter	starter	
	45		voltage/ Ah		V/Ah	12/100	12/100	12/100
	46		Weight		kg	25	25	25
	47	Engine	Manufacturer / type		Perkins404C22	Perkins404C22	Perkins404C22	
	48		Performance ISO/ TR 14 396		kW	38	38	38
	49		RPM		n/min	3000	3000	3000
	50		Torque		Nm/n	143/1800	143/1800	143/1800
	51		no of/ cylinders/ volume			4/4/2200	4/4/2200	4/4/2200
	52	Clutch	Type					
	53	Shifting	Type		stepless	stepless	stepless	
54	No of gears, front/ rear		2/2	2/2	2/2			
55	Transmission	Type		hydrostatic	hydrostatic	hydrostatic		
Cplements	56	Hydr. pressure	for attachments	bar	180	180	180	
	57	Steering system	Type		hydrostatic	hydrostatic	hydrostatic	
	58	Lighting	Yes/ No		Yes	Yes	Yes	
*) without load, modification reserved without notice								
h1 = h3/2 + 915; h4 = h3 + 915								